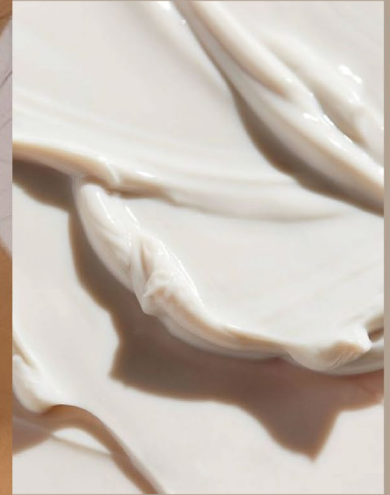


HERBAL COSMETICS FOR FACE CARE

Step-by-step care



Where the roads leading to perfection converge, where one tiny drop can change the world.





βοτανικός

a Greek word as
«related to plants».

Contents

About company.....	4
What is and what is not in Botavikos products.....	6
Herbal cosmetics for skin beauty	7
NUTRITION & BALANCE for oilyand problem skin	9
RECOVERY & CARE for sensitive skin.....	17
MOISTURAZING & CARE for dry and dehydrated skin	29
TONE & ELASTICITY for normaland aging skin	39
Product ingredients.....	47
Range of Botavikos cosmetics for the face	51



In our trips to various places in the world we have seen vast lavender and salvia fields, plantations of blossoming lime and almond. A single glance at this vast variety of colors arose a splendor of emotions and the air infused with incredible fragrances inspired energy.

We are eager to share with you our admiration of nature perfection — its aromas, textures, energy. We have developed a line of cosmetic products for skin care, which contains a unique aromatic composition of essential oils and active ingredients.

Yana Vershigruk
Creator and CEO of
BOTAVIKOS

Botavikos

Is a Russian manufacturer of natural cosmetics and a supplier of a wide assortment of essential and vegetable oils for aromatherapy and natural cosmetics.

Fresh

The young and modern Botavikos brand opens the boundless world of natural fragrances and natural cosmetics. The world of sensuality and appeasement. The world of inspiration and self-knowing. The world of joy.

83

Natural essential oils – from sweet flag to elemi. We have collected the widest palette of fragrances that will help everyone transform space into a fragrant aroma magic. We know how to coax the grass and trees to share their strength and freshness.

50

Vegetable oils and butters – from apricot to cotton, will surprise you with a variety of useful elements and will become an irreplaceable source of fatty acids Omega 3-6-9.

Over 300

Unique natural cosmetic products will give a careful physiological care for the body and hair, each time the interesting natural composition of essential oils turns a humdrum procedure into a fragrant ritual.

ISO 9001

We are constantly updating the range, choosing only natural ingredients that are safe in production. All raw materials are produced in accordance with the international quality standard ISO 9001.



Botavikos is a member of International Federation of Essential Oils, Aroma Trade and Russian perfume and beauty products (RPKA), Biorus. This membership means that our production meets all international safety and sourcing requirements for perfumery and cosmetics and we are committed to the principles of rational use of environmental resources.

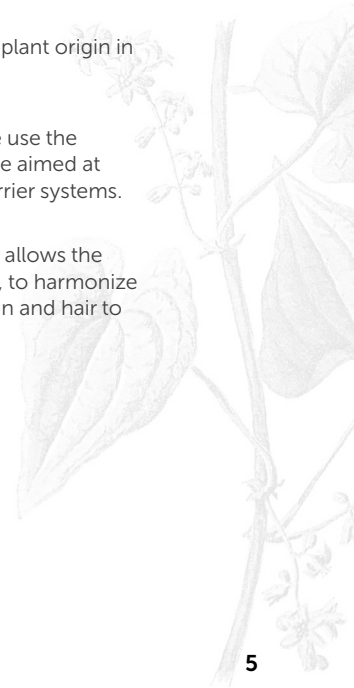


Competitive advantages of the brand

At least **95% of natural ingredients** of plant origin in each product.

In the production of our cosmetics, we use the **principles of corneotherapy**, which are aimed at restoring the skin and protecting its barrier systems.

Botavikos cosmetics – vegetative care, allows the restoration of natural protective forces, to harmonize physiological processes, to help the skin and hair to become healthy.



The uniqueness of the composition of Botavikos cosmetics

Our cosmetics consists of:

- ✓ «green» surfactants of plant origin
- ✓ essential oils of vegetable origin
- ✓ fatty oils and butters of vegetable origin
- ✓ flower water
- ✓ plant extracts
- ✓ vegetable waxes
- ✓ amino acids
- ✓ vitamins

What we never use:

- ✗ aggressive synthetic ingredients
- ✗ mineral oils, paraffin and petroleum jelly
- ✗ parabens
- ✗ dyes
- ✗ silicones
- ✗ perfumes
- ✗ SLS/SLES
- ✗ GMO





Herbal cosmetics for skin beauty

We have developed 4 product lines for different skin types and conditions, considering all its needs.

- ▶ **NUTRITION & BALANCE**
for oily and problem skin
- ▶ **RECOVERY & CARE**
for sensitive skin
- ▶ **MOISTURIZING & CARE**
for dry and dehydrated skin
- ▶ **TONE & ELASTICITY**
for normal and aging skin

Vitamins in our products

Each series is enriched with a complex of vitamins that preserve the beauty and youth of the skin:

- | | | |
|---|---|---|
| Vitamin E | Vitamin F | Vitamin C |
| <ul style="list-style-type: none">• reduces inflammation• lifting effect• refreshes• gives shine | <ul style="list-style-type: none">• soothes• reduces puffiness• improves protective functions | <ul style="list-style-type: none">• cleanses from rashes• increases elasticity• against age spots |



Steps of skin care

- STEP 1** **Makeup remover & cleansing**
Micellar water / milk / gel / musse / foam –
for makeup removal and gentle daily skin cleansing.
- STEP 2** **Deep cleansing**
Fine-grained natural scrubs based on sugar, salt,
ground shells or seeds - for deeper skin cleansing.
- STEP 3** **Intensive care**
Masks and serums with an enhanced complex of as-
sets – for intensive care.
- STEP 4** **Daily care**
Creams – with the most delicate textures
and tonic-hydrolate – to complete cleansing
and normalize the pH of the skin after contact with
water.





BASED ON CHAMOMILE FLORAL WATER

NUTRITION & BALANCE

for oily and problem skin

We have combined products designed to solve typical problems of oily and problematic skin – redness, peeling and itching, greasy shine, dull complexion.

Ginger extract – has a powerful antibacterial, antiseptic and immunomodulatory effect, regulates the production of sebum, cleanses pores from dirt, removes toxins, mattifies and tones the skin.

Rosemary extract – normalizes the activity of the sebaceous glands, reducing the process of sebum production and narrowing the pores, has an anti-inflammatory, toning, firming and moisturizing effect, has antioxidant properties.

Salicylic acid – enhances the antimicrobial protection of the skin and stops inflammatory processes, has antifungal activity, gently exfoliates dead cells, cleanses and narrows pores, reduces greasy shine.

The Nutrition & Balance series is enriched with a complex of vitamins that preserve the health and beauty of the skin.

Vitamin E – normalizes the function of the sebaceous glands, reduces the inflammatory processes of the skin, accelerates the recovery and healing of the skin.

Vitamin F – relieves redness of the skin, restores the lipid barrier of the skin, helps to get rid of dryness and peeling.



Nutrition & Balance series products normalize the sebaceous glands, purify and narrow pores, saturate the skin with vitamins and trace elements. Natural formulas accelerate cell renewal, promote the restoration of damaged areas of the skin, align its microrelief and tone.

A complex of three oils:

Borago oil - a source of rare gamma-linoleic acid, has anti-inflammatory, emollient, and antioxidant properties. It is able to retain water, increasing the hydration of the skin, making it supple and hydrated.

Black currant oil – reduces inflammatory processes, accelerates skin regeneration, activates metabolic processes. The content of gamma-linolenic acid allows you to effectively fight rashes of any origin, acne and acne.

Evening primrose oil – optimizes the process of sebo-regulation, a unique ratio of fatty acids the oil restores the structure of the epidermis, instantly enhances barrier functions and normalizes hydration, accelerates healing processes, smoothes the skin surface.

Chamomile flower water – has antiseptic, regenerating and healing properties, has a powerful anti-inflammatory effect on the skin with acne, soothes and moisturizes the skin.



Olfactory story

Mint + Cardamom

Following the icy mint, notes of lemon and cardamom are revealed, adding coolness with subtle citrus accents that soften the floral shades of geranium and rose, flaring up in the finale with a hot accord of woody cedar, patchouli and black pepper.

Top

mint / lemon

Heart

geranium / rose

Base

cedar / patchouli / cardamom / black pepper

Dermatological studies conducted among women aged 18 to 40 years with skin prone to greasiness, who used cosmetic products with organic cypress extract twice a day, for 56 days, showed:

- reduced sebum production and noticeable reduction of pores in 56% of women
- less oily skin in 90% of women
- reduction of oily skin shine in 82% of women
- overall improvement of the condition and appearance of the skin in 91% of women

Products

Step 1 – micellar water, cleansing gel

Step 2 – natural cedar shell scrub with Saki salt

Step 3 – seboregulating mask, balancing serum

Step 4 – matting cream, balancing tonic-hydrolate, perfecting spot corrector

STEP 1 Makeup remover & cleansing

Micellar water

200 ml

Effect

- effectively removes make-up
- gently removes impurities
- regulates sebum production
- moisturizes and refreshes the skin

Active components

The **ginger extract** has a toning and antioxidant effect.

Plant oils of blackcurrant, evening primrose and borage feed the skin with nutrients and tone it.

Vitamin E boosts cell regeneration,

Vitamin F soothes the skin, reduces redness and irritation.

The natural **chamomile flower water** effectively soothes irritations, moisturises and refreshes the skin.

Directions

Apply the water on a cotton pad and wipe on massage lines the face, eyes and lips, removing pollution and makeup. Rinse with warm water. For morning and evening use.

Recommendation: complete the cleansing with a tonic-hydrolate.



Cleansing gel

200 ml

Effect

- gently cleanses the skin
- soothes and refreshes
- normalizes sebum function
- has a tonic and moisturizing effect

Active components

Ginger extract normalizes the balance of the skin and provides protection from free radicals.

Vegetable oils of black currant, evening primrose and borage saturate the skin with nutrients, maintain its tone.

Vitamin E accelerates cell renewal.

Vitamin F helps to reduce redness and irritation.

Natural chamomile flower water balances sebum production, effectively soothes, moisturizes and refreshes the skin.

Directions

Apply a small amount of gel to damp skin of face and neck, massage for 1 minute, avoiding around the eyes area, rinse with warm water. Use morning and evening.

Recommendation: complete the cleansing with a tonic-hydrolate.





STEP 2 Deep cleansing

Natural cedar shell scrub with Saki salt

100 g



Effect

- cleanses deeply without disturbing the hydrolipid barrier
- improves microcirculation
- evens out skin microrelief

Active components

Crushed pine nut shell and healing Saki salt crystals provide deeply cleanse the skin of impurities and keratinized particles, thereby activating metabolic processes and improving cells nutrition.

Ginger extract promotes skin renewal, protects against free radicals, and refreshes the complexion.

Salicylic acid has an exfoliating and antibacterial effect, effectively cleanses pores, and regulates sebum production.

Herbal oils nourish the skin with micronutrients and maintain the hydrolipid balance.

Directions

Apply a small amount of scrub to cleansed, damp skin, massage without effort for 1 minute and rinse with water. Use 1-2 times a week.

Recommendation: after contact with water complete the process with a tonic-hydrolate and use a seboeregulating mask for intensive care.

STEP 3 Intensive care

Seboregulating mask

75 ml

Effect

- reduces excessive sebum activity
- effectively cleanses and tightens pores
- reduces visible skin imperfections
- prevents post-acne development

Active components

Kaolin not only gently removes dead cells and impurities from the skin surface, but also absorbs excess sebum.

Fermented licorice normalizes sebaceous glands functioning, tightens pores, soothes irritations and provides antioxidant skin protection.

Oils complex with a high content of linoleic acid restores the skin's natural moisture level.

Regular use of the product maintains the hydrolipid balance of the skin and restores its healthy look.

Directions

Clean the skin with Nutrition & Balance remedies - step 1 and 2, apply a small amount of the mask, leave it for 10-15 minutes, rinse with warm water. The mask is recommended to use 1-2 times a week.

Recommendation: after the mask apply the balancing serum to complete intensive care step.



Balancing serum

30 ml

Effect

- normalizes sebum function, tightens pores
- saturates the skin with vitamins and microelements
- helps reduce inflammation
- smooths the skin tone

Active components

The concentrated serum formula provides the most effective care for oily and problematic skin.

Salicylic acid has an exfoliating and antibacterial effect, helps to cleanse pores and normalize sebum production.

Ginger extract activates skin regeneration, protects against free radicals, and refreshes the complexion. Herbal oils intensively nourish the cells and strengthen the hydrolipid barrier.

The visible result - smooth, radiant skin without any greasy shine.

Directions

Clean the application area by Nutrition & Balance remedies - step 1, and apply a small amount of the serum along the massage lines, avoiding the area around the eyes. Leave until completely absorbed. It is recommended to use once a day before applying the cream in the morning or evening.

Recommendation: to improve the effect, top the serum with a matting cream for daily care.



STEP 4 Daily care

Matting cream

50 ml

Effect

- mattifies and evens out skin tone reduces visible imperfections
- moisturizes and restores water balance
- activates skin protective functions

Active components

Kaolin effectively cleanses the skin, evens out its tone, and absorbs excess sebum.

Alpine fireweed extract normalizes sebum function, tightens pores, prevents comedones, and has an antioxidant effect.

Herbal oils and extracts nourish the cells with micronutrients and maintain the hydrolipid balance. The cream visibly improves the skin appearance, leaving it smooth and refreshed. The product has a light texture and absorbs quickly, so it can be used as a base for makeup.

Directions

Pre-cleanse the skin of the face with Nutrition & Balance products - steps 1 and 2, apply the cream along the massage lines, avoiding around the eyes area. It is recommended to apply daily morning and evening.

Recommendation: after the cream for intensive care, use the Nutrition & Balance serum in the evening.



Balancing tonic

chamomile hydrolate

100 ml

Effect

- normalizes the pH balance
- regulates sebum production
- tones, moisturizes and refreshes

Active components

The balancing tonic-hydrolate effectively moisturises and refreshes the skin, reinforcing its barrier functions.

The natural product effectively soothes the epidermis, reducing redness and irritation. Due to its spray form, the tonic is easy to apply even over makeup.

Directions

Spray on clean face and neck after cleansing and wipe with a cotton pad. To instantly refresh and moisturize the skin, spray over makeup and let dry. Can be used several times during the day.



STEP 4 Daily care

Perfecting spot corrector

20 ml

Effect

- locally reduces inflammation and redness
- evens out skin tone
- reduces the appearance of post-acne

Active components

Spot corrector cream is intended for local correction of inflammation and redness.

Azelaic and salicylic acids exfoliate, effectively cleaning pores and reducing sebum production. Allantoin deeply moisturizes and softens the skin, helping to tighten pores and soothe irritation.

Zinc regulates skin oiliness and has an antibacterial effect. Centella asiatica extract activates tissue regeneration and repair of damaged skin.

Herbal oils and extracts maintain the hydrolipid balance of the skin, restoring its healthy and radiant look.

Directions

Pre-cleanse the application area with Nutrition & Balance products - step 1, apply a small amount of cream pointwise to the inflammations, avoiding around the eyes area. Leave until completely absorbed. Use the remedy 1-2 times a day.

NATURAL
• 98,6% •
INGREDIENTS





BASED ON WITCH HAZEL FLORAL WATER

RECOVERY & CARE

for sensitive skin

We have combined products designed to solve typical problems of sensitive skin – redness, peeling and itching, discomfort, dull complexion.

Arnica extract strengthens the walls of the skin vessels, increases the skin's resistance to negative factors, relieves puffiness, normalizes the lipid barrier, increases the skin's ability to produce collagen, reduces vascular asterisks on the skin. Accelerates intradermal metabolism, promotes skin regeneration, stimulates healing and cleansing of the skin, has an antiseptic effect.

Wax from sprouted barley grains – improves skin regeneration, relieves irritation, reduces allergic reactions and increases the protective functions of the skin.

Witch hazel flower water – effectively relieves inflammation and itching, soothes, moisturizes and tones the skin, has a powerful antioxidant effect, accelerates the healing of damaged skin areas.

The Recovery & Care series is enriched with a complex of vitamins that preserve the health and beauty of the skin.

Complex of vitamins C, E, F, B3 – relieves redness and irritation of sensitive skin, restores the lipid barrier of the skin, relieves dryness and peeling, reduces sensitivity, preserves youth and beauty of the skin.





Recovery & Care products effectively soothe the skin and reduce its reactivity, strengthen the hydrolipid barrier, relieve itching and peeling. Natural formulas accelerate cell renewal and repair of damaged areas of the skin, intensively nourish and soften it.

A complex of three oils:

Argan oil is rich in unique monounsaturated Omega-7 fatty acid, soothes and softens the skin, protects the skin from UV rays.

Shea butter nourishes and moisturizes, restores the lipid layer, increases protective properties, improves microcirculation, stimulates the regeneration of skin cells.

Flax oil – soothes sensitive skin, relieves irritation, redness and peeling, strengthens and protects the skin from the effects of negative factors.



Olfactory story

Basil + Lemongrass

The harmonious combination of light citrus orange, lemon, citronella and lemongrass is followed by a spicy-oriental duet of sweet basil with herbal and spice nuances and licorice-balsamic anise, complemented in the final by the soft woodiness of rosewood.

Top

orange / lemon / citronella

Heart

basil / lemongrass

Base

anise / rosewood

Dermatological studies conducted among women aged 18 to 40 years with skin prone to irritation and various rashes, who used cosmetic products containing wax from sprouted barley grains twice a day for 28 days, showed:

- soothing (anti-itching) effect was observed by 80% of women
- the restoring effect was observed by 86% of women
- overall improvement of the condition and appearance of the skin in 91% of women

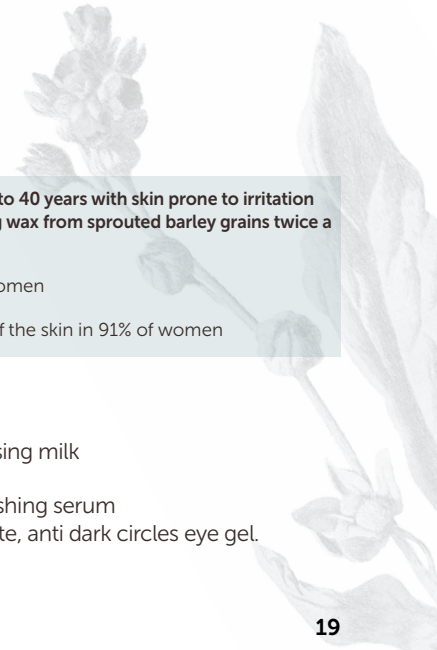
Products

Step 1 – micellar water, cleansing mousse, cleansing milk

Step 2 – natural walnut shell scrub-powder

Step 3 – soothing cream-mask, revitalizing nourishing serum

Step 4 – soothing cream, soothing tonic-hydrolate, anti dark circles eye gel.



STEP 1 Makeup remover & cleansing

Micellar water

200 ml

Effect

- effectively removes makeup
- gently removes impurities
- moisturizes and soothes the skin
- maintains hydrolipid balance

Active components

The formula with panthenol and arnica extract provides a soothing and regenerating effect.

The unique blend of oils perfectly softens the skin, strengthens its hydrolipid barrier and relieves itching and discomfort.

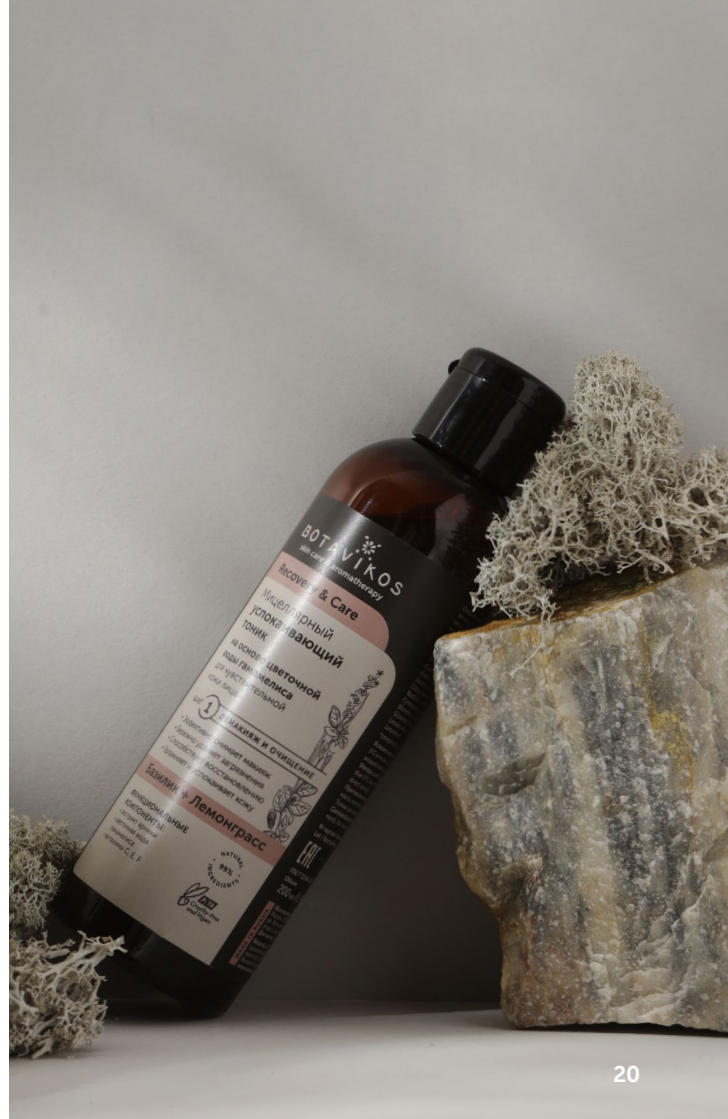
Hamamelis flower water strengthens the skin's protective functions.

Natural product removes the feeling of tightness and gives a feeling of comfort.

Directions

Apply the water on a cotton pad and wipe on massage lines the face, eyes and lips, removing pollution and makeup. Rinse with warm water. For morning and evening use.

Recommendation: complete the cleansing with a tonic-hydrolate.



STEP 1 Makeup remover & cleansing

Cleansing mousse

150 ml

Effect

- gently cleanses makeup and impurities
- nourishes, moisturizes and soothes the skin
- maintains hydro-lipid balance

Active components

The formula with **panthenol and arnica extract** provides a soothing and regenerating effect.

The unique blend of oils perfectly softens the skin, strengthens its hydro-lipid barrier and relieves itching and discomfort.

Hamamelis flower water strengthens the skin's protective functions.

Natural product removes the feeling of tightness and gives a feeling of comfort.

Directions

Apply a small amount of mousse to damp skin of the face and neck, massage for 1 minute, avoiding the area around the eyes. Wash off with warm water. Use morning and evening.

Recommendation: complete the cleansing with a tonic-hydrolate.



Cleansing milk

200 ml

Effect

- effectively removes makeup and impurities
- moisturizes, softens and soothes the skin
- maintains hydro-lipid balance

Active components

Arnica extract strengthens the walls of the skin vessels, increases the skin's resistance to negative factors, relieves puffiness, normalizes the lipid barrier, increases the skin's ability to produce collagen, reduces vascular asterisks on the skin.

The complex of argan, flax and shea butter nourishes and moisturizes, soothes and softens the skin, restores the lipid layer, relieves irritation, redness and peeling.

Vitamin E, F complex – relieves redness and irritation of sensitive skin, restores the lipid barrier of the skin, relieves dryness and peeling, reduces sensitivity.

Witch hazel flower water effectively relieves irritation and itching, soothes, reduces redness, accelerates the healing of damaged skin areas.

Directions

Apply a small amount of milk to dry skin of the face and neck, massage for 1 minute, rinse with warm water. Use morning and evening.

Recommendation: complete the cleansing with a tonic-hydrolate.





BOTAVIKOS
skin care & aromatherapy

Recovery & Care

Деликатное очищающее молочко

для чувствительной
кожи лица

ШАГ 1 Демакияж и Очищение

- Снимает макияж и очищает от загрязнений
- Увлажняет, смягчает и успокаивает кожу
- Предотвращает появление микроразрезов

Базиллик + Лемонграсс

**ФУНКЦИОНАЛЬНЫЕ
КОМПОНЕНТЫ:**

- эфирное масло
- цветочная вода
- гаммелисса
- растительные масла: арганы, льна, ши
- витамин Е, F

98.8%
NATURAL
INGREDIENTS



BOTAVIKOS
skin care & aromatherapy

Recovery & Care

Нежный очищающий мусс

для чувствительной
кожи лица

ШАГ 1 Демакияж и Очищение

- Снимает макияж и очищает от загрязнений
- Обладает противовоспалительным эффектом
- Улучшает цвет лица и текстуру кожи

Базиллик + Лемонграсс

**ФУНКЦИОНАЛЬНЫЕ
КОМПОНЕНТЫ:**

- экстракт аргании
- цветочная вода
- гаммелисса
- растительные масла: арганы, льна, ши

98.8%
NATURAL
INGREDIENTS



STEP 2 Deep cleansing

Natural walnut shell scrub-powder

100 g



Effect

- deep cleanses
- improves microcirculation
- evens out microrelief and skin tone

Active components

Natural scrub with **crushed walnut shell (powder)** deeply cleanses the skin and prepares it for daily or intensive care.

The fine abrasive particles gently remove dead skin cells, smooth out the skin surface, and accelerate the regeneration process.

Arnica extract helps reducing redness and healing damaged skin.

A unique blend of shea butter, argan and flax oils relieves itching and discomfort.

Directions

Apply a small amount of scrub to cleansed, damp skin, massage without effort for 1 minute and rinse with water. Use 1 time per week.

Recommendation: after contact with water complete the process with a tonic-hydrolate and use a soothing cream mask for intensive care.



STEP 3 Intensive care

Soothing cream-mask

75 ml

Effect

- reduces redness and irritation
- evens out the microrelief
- strengthens the skin's protective barrier
- refreshes complexion

Active components

A plant-based cream mask has been specially developed for the sensitive skin care.

An effective formula with sprouted barley grains wax and essential oils provides a pronounced soothing effect.

Arnica extract accelerates the regeneration of damaged areas, while witch hazel flower water normalizes the hydrolipid balance of the skin.

Regular use of the mask helps to relieve discomfort and reduce skin reactivity.

Directions

Clean the skin with Recovery & Care remedies – step 1 and 2, apply a small amount of the mask, leave it for 10-15 minutes, rinse with warm water. The mask is recommended to use 1-2 times a week.

Recommendation: after the mask apply the revitalizing nourishing serum Recovery & Care to complete intensive care step.





STEP 3 Intensive care

Revitalizing nourishing serum

30 ml

Effect

- helps reduce irritation, flaking and redness
- deeply nourishes and moisturizes
- maintains lipid balance
- ideal for daily care of sensitive skin

Active components

Ideal for daily care of sensitive skin with **a complex of plant extracts and precious oils** provides a strong soothing and regenerating effects – reduces peeling and redness, eliminates itching, restores the epidermis.

Flower water maintains the skin hydrolipid balance.

Regular use of the serum relieves discomfort and gives the skin a healthy radiant look.

Directions

Pre-cleanse the application area with Recovery & Care products – step 1, apply a small amount of the serum along the massage lines. Leave until completely absorbed. It is recommended to use once a day before applying the daily care cream (morning or evening).

Recommendation: to improve the effect, top the serum with a soothing cream for daily care.



STEP 4 Daily care

Soothing cream

50 ml

Effect

- reduces irritation, peeling and redness
- deeply moisturizes and softens the skin
- activates cell regeneration
- maintains hydro-lipid balance

Active components

A plant-based cream designed for the sensitive skin complex daily care.

An effective formula with **a complex of plant extracts and precious oils** provides a pronounced soothing and regenerating effects – reduces peeling and redness, relieves itching, restores the epidermis.

Flower water maintains the skin hydro-lipid balance.

Regular use of the product helps to relieve discomfort and reduce skin reactivity.

Directions

Pre-cleanse the skin of the face with Recovery & Care products – steps 1 and 2, apply the cream along the massage lines, avoiding around the eyes area. It is recommended to apply daily, morning and evening.

Recommendation: after the cream for intensive care, use with Recovery & Care Revitalizing Nourishing Serum.



Soothing tonic witch hazel hydrolate

100 ml

Effect

- normalizes the pH balance
- reduces irritation and redness
- tones, hydrates and refreshes

Active components

The soothing hamamelis hydrolate- tonic effectively soothes, moisturizes and refreshes the skin, eliminates feelings of dryness and tightness. The product normalizes the pH balance and stimulates the renewal process of the epidermis. Due to the spray form, the toner is easy

Directions

Spray on clean face and neck after cleansing and wipe with a cotton pad. To instantly refresh and moisturize the skin, spray over makeup and let dry. Can be used several times during the day.





BOTAVIKOS
skin care & aromatherapy

Recovery & Care

**Witch hazel
Floral Water**
for sensitive
skin

- Soothes skin
- Provides antioxidant action
- Improves hydration of the skin

NATURAL
99%
INGREDIENTS

100%
Cruelty-Free
and Vegan

ШАГ 4 DAILY CARE / ЕЖЕДНЕВНЫЙ УХОД

**Цветочная вода
гамамелиса**
для чувствительной
кожи

- Успокаивает раздраженную кожу
- Обеспечивает антиоксидантный эффект
- Эффективно увлажняет кожу



BOTAVIKOS
skin care & aromatherapy

Recovery & Care

**Soothing
cream**
for sensitive skin

STEP 4 DAILY CARE / ЕЖЕДНЕВНЫЙ УХОД

**Успокаивающий
крем**
для чувствительной кожи

- Увлажняет, смягчает и стимулирует процессы регенерации
- Устраняет шелушения и покраснения
- Повышает барьерные функции кожи



NATURAL
99%
INGREDIENTS

100%
Cruelty-Free
and Vegan

STEP 4 Daily care

Anti dark circles eye gel

for sensitive skin around the eyes

20 ml

Effect

- helps reducing dark circles and puffiness under the eyes
- deeply moisturizes and nourishes
- refreshes and improves skin tone
- protects against the negative impact of external factors

Active components

Gel-serum against dark circles for sensitive skin around the eyes is intended for daily care of thin sensitive skin around the eyes.

Caffeine has a tonic and transforming effect, reducing the signs of fatigue and stress.

Chlorella extract helps reducing dark circles, centella asiatica extract accelerates cells regeneration.

Niacinamide activates collagen synthesis and effectively soothes, hydrates and brightens the sensitive skin.

The gel-serum returns natural radiance to the skin around the eyes, eliminates dryness and tightness feeling.

Directions

Pre-cleanse the application area with Recovery & Care products – step 1, apply a small amount of gel-serum with light patting movements on the orbital bone. Leave until completely absorbed. Use the remedy by courses lasting 30-45 days with breaks of 1-1,5 months, 1-2 times a day.

NATURAL
99%
INGREDIENTS





BASED ON CORNFLOWER FLORAL WATER

MOISTURIZING & CARE

for dry and dehydrated skin

We have combined products designed to solve the typical problems of dehydrated, normal and dry skin – feelings of tightness, redness, peeling and itching, dull complexion.

Rosehip extract – restores the water balance of the skin, blocks moisture loss, accelerates metabolic processes in cells, improves lymphatic drainage.

Betaine – instantly moisturizes the upper layers of the skin, regulates and maintains the water balance, restores the barrier functions of the skin.

Biosaccharide complex – saturates the skin with moisture, binding and retaining it in the skin, improves metabolic processes, tones and tightens the skin.

Cornflower flower water – moisturizes and tones the skin, reduces fine wrinkles.

The Moisturizing & Care series is enriched with a complex of vitamins that preserve the health and beauty of the skin.

A complex of vitamins C, E, F – helps maintain moisture levels, restores the hydrolipidic balance of the skin, relieves dryness and relieves irritation.



Moisturizing & Care series products provide deep long-lasting hydration, restoration and nutrition of the epidermis. Natural formulas prevent premature aging and protect the skin from the effects of adverse external factors.

A complex of three oils:

Coconut oil – intensively moisturizes the skin, preventing dryness and peeling, smoothes and improves metabolic processes, penetrates quickly and deeply into the skin. Highly nutritious oil with unique protective properties.

Mango butter – restores the structural shell of skin cells, provides intensive moisturizing of the skin for a long time, returns the ability to retain moisture to the skin.

Camellia oil – penetrates deeply into the skin, reduces moisture loss and enhances the protective functions of the epidermis.





Olfactory story

Verbena + Eucalyptus

An elegant fragrance with a predominance of cool notes of orange, lemon and elemi, dissolving in a floral-citrus trail of litsei kubeba and verbena. Fresh camphor eucalyptus with sweet waxy aspects and bitter-herbal galbanum bring the fragrance to its logical conclusion with a balsamic splash.

Top

orange / lemon / elemi

Heart

galbanum / verbena

Base

eucalyptus / litsea cubeba

Dermatological studies conducted among women aged 35 to 55 years with skin prone to dryness and peeling, who used cosmetic products containing a biosaccharide complex twice a day for 14 days, showed:

- improve the softness and smoothness of the skin by more than 50%
- reduce peeling by more than 50%
- improvement of skin elasticity by more than 20%

Products

Step 1 – micellar water, cleansing gel

Step 2 – natural walnut shell scrub with sugar crystals

Step 3 – moisturizing mask, moisturizing serum

Step 4 – moisturizing cream, moisturizing tonic-hydrolate, moisturizing fluid

STEP 1 Makeup remover & cleansing

Micellar water

200 ml



Effect

- effectively removes makeup and impurities
- moisturizes and softens the skin
- maintains hydrolipid balance
- refreshes complexion

Active components

Rosehip extract – restores the water balance of the skin, blocks moisture loss, accelerates metabolic processes in cells, improves lymphatic drainage.

Betaine – instantly moisturizes the upper layers of the skin, regulates and maintains the water balance, restores the barrier functions of the skin.

A complex of vitamins E, F – helps maintain moisture levels, restores the hydrolipidic balance of the skin, relieves dryness and relieves irritation.

The complex of coconut, mango and camellia oils – reduces moisture loss, provides intensive skin hydration for a long time.

Cornflower flower water – moisturizes and tones the skin, reduces fine wrinkles.

Directions

Apply the water on a cotton pad and wipe on massage lines the face, eyes and lips, removing pollution and makeup. Rinse with warm water. For morning and evening use.

Recommendation: complete the cleansing with a tonic-hydrolate.

Cleansing gel

200 ml



Effect

- gently cleanses the skin of makeup and impurities
- moisturizes and softens the skin
- maintains hydrolipid balance
- refreshes complexion

Active components

Betaine perfectly soothes and moisturizes the epidermis, strengthens the hydrolipid barrier.

Rosehip extract tones, improves microcirculation and accelerates metabolic processes in cells.

Coconut, mango and camellia oils have a restorative and firming effect, saturate the skin with moisture and essential fatty acids, activate its protective functions.

Vitamin E serves as the strongest antioxidants, activates cell regeneration.

Vitamin F fills them with moisture and prevents its loss.

Due to the content of natural bioflavonoids, **cornflower flower water** provides an antibacterial effect, moisturizes and tones the skin.

Directions

Apply a small amount of gel to damp skin of face and neck, massage for 1 minute, avoiding around the eyes area, rinse with warm water. Use morning and evening.

Recommendation: complete the cleansing with a tonic-hydrolate.



BOTAVIKOS
skin care & aromatherapy

Moisturizing & Care

**Очищающий
гель**
для сухой
и обезвоженной
кожи лица

ШАГ 1 ДЕМАКИЯЖ И ОЧИЩЕНИЕ

- Эффективно удаляет загрязнения и увлажняет баланс
- Освежает и выравнивает тон

Вербена + Эвкалипт

ФУНКЦИОНАЛЬНЫЕ КОМПОНЕНТЫ:

- Экстракт вербены
- Экстракт эвкалипта
- Водянистая вода василька
- Масло лимона
- Глицерин
- Цетиловый спирт



BOTAVIKOS
skin care & aromatherapy

Moisturizing & Care

**Мицеллярный
увлажняющий
тоник**
на основе цветочной
воды василька
для сухой и обезвоженной
кожи лица

ШАГ 1 ДЕМАКИЯЖ И ОЧИЩЕНИЕ

- Эффективно снимает макияж
- Бережно удаляет загрязнения и увлажняет водный баланс
- Освежает и выравнивает тон

Вербена + Эвкалипт

ФУНКЦИОНАЛЬНЫЕ КОМПОНЕНТЫ:

- Экстракт эвкалипта
- Экстракт вербены
- Водянистая вода василька
- Масло лимона
- Глицерин
- Цетиловый спирт



STEP 2 Deep cleansing

Натуральный скраб из косточки грецкого ореха

100 g

NATURAL
100%
INGREDIENTS

Effect

- deeply cleanses and provides micro massage
- promotes intensive cells hydration and nutrition
- evens out microrelief and improves complexion

Active components

Thanks to its multi-fractional scrubbing ingredients, containing ground **walnut shells** and **sugar crystals**, the scrub gently removes impurities and dead skin cells, and promotes the penetration of nutrients into the deeper skin layers.

Rosehip extract tones the skin, improves microcirculation, and boosts metabolic processes in cells.

Coconut, mango and camellia oils have a regenerating and firming effect, saturate the skin with vitamins and fatty acids, and activate its protective functions.

The natural product perfectly refreshes the skin, giving it a well-groomed look.

Directions

Apply a small amount of scrub to cleansed, damp skin, massage without effort for 1 minute and rinse with water. Use 1-2 times a week.

Recommendation: after contact with water complete the process with a tonic-hydro-late and use a moisturizing mask for intensive care.





STEP 3 Intensive care

Moisturizing mask

75 ml

NATURAL
99%
INGREDIENTS

Effect

- deeply moisturizes and eliminates the feeling of tightness
- improves tone and elasticity
- strengthens the hydrolipid barrier

Active components

Due to the active plant-based ingredients - **betaine and fermented polysaccharide hydrolyzate** - the mask intensively moisturizes the skin, makes it soft and smooth, and maintains the hydrolipid balance.

Rosehip extract protects against the negative effect of free radicals, providing premature aging prevention.

Betaine actively moisturizes, soothes irritations, and improves the skin appearance.

Herbal oils and vitamins improve skin tone and elasticity, saturate it with essential micronutrients and vitamins, and restore an even and healthy complexion.

Hypoallergenic carnauba wax prevents the moisture evaporation and enhances the skin protective function.

Moisturized, radiant skin with no feeling of dryness or tightness is the immediate result.

Directions

Clean the skin with Moisturizing & Care remedies - step 1 and 2, apply a small amount of the mask, leave it for 10-15 minutes, rinse with warm water. The mask is recommended to use 1-2 times a week. Apply the moisturizing serum Moisturizing & Care to complete intensive care step.

Recommendation: after the mask apply the moisturizing serum Moisturizing & Care to complete intensive care step.

STEP 3 Intensive care

Moisturizing serum

30 ml

NATURAL
99%
INGREDIENTS

Effect

- instantly moisturizes
- effectively eliminates peeling
- maintains hydrolipid balance
- fills the skin with vitamins and microelements

Active components

A natural moisturizer is designed for daily care of skin prone to dryness and peeling.

The fermented polysaccharide hydrolyzate provides deep moisturizing and protects the skin from free radicals.

Rosehip extract tones the skin, improves microcirculation, and boosts metabolic processes in the cells.

Betaine actively moisturizes, soothes irritations, and improves the skin appearance.

Due to the content of **coconut, mango and camellia oils**, the cream carefully cares for the skin, perfectly softens it and maintains the hydro-lipid balance.

Directions

Pre-cleanse the application area with Moisturizing & Care products – step 1, apply a small amount of the serum along the massage lines. Leave until completely absorbed. It is recommended to use once a day (morning or evening).

Recommendation: to improve the effect, top the serum with a moisturizing cream for daily care.



STEP 4 Daily care

Moisturizing tonic

cornflower hydrolyate

100 ml

Effect

- normalizes the pH balance
- controls puffiness and dark circles under the eyes
- tones, moisturizes and refreshes

Active components

The moisturizing **cornflower hydrolyate-tonic** perfectly moisturizes and tones the skin, but also helps to reduce puffiness and dark circles under the eyes. It is ideal for the care of dry, dehydrated and normal skin, as well as the eye area. Due to its spray form, the floral water is easy to apply even over makeup.

Directions

Spray on clean face and neck after cleansing and wipe with a cotton pad. To instantly refresh and moisturize the skin, spray over makeup and let dry. Can be used several times during the day.



Moisturizing cream

50 ml

Effect

- deeply moisturizes and softens
- tones, filling the skin with energy and radiance
- is an ideal makeup base

Active components

A natural moisturizer is designed for daily care of skin prone to dryness and peeling.

The fermented polysaccharide hydrolyzate provides deep moisturizing and protects the skin from free radicals.

Rosehip extract tones the skin, improves microcirculation, and boosts metabolic processes in the cells.

Betaine actively moisturizes, soothes irritations, and improves the skin appearance.

Due to the content of **coconut, mango and camellia oils**, the cream carefully cares for the skin, perfectly softens it and maintains the hydrolipid balance.

Directions

Pre-cleanse the skin of the face with Moisturizing & Care products – steps 1 and 2, apply the cream along the massage lines, avoiding around the eyes area. It is recommended to apply daily, morning and evening.

Recommendation: after the cream for intensive care, use with Moisturizing & Care moisturizing serum.



STEP 4 Daily care

Fluid instant effect

for around the eyes area

20 ml

Effect

- instantly moisturizes and eliminates the tightness feeling
- maintains hydro lipid balance
- improves skin elasticity
- returns a fresh rested look

Active components

A lightweight fluid with a delicate texture has been designed specifically for quality eye care.

Thanks to its **betaine and fermented polysaccharide hydrolysate** content, it intensively moisturizes the skin, makes it soft and smooth, and strengthens the hydro lipid barrier.

Rosehip, echinacea, and violet extracts have a moisturizing and regenerating effect, protect against the negative effects of free radicals.

Herbal oils and vitamins keep the skin toned, and restore an even and healthy complexion.

Cornflower flower water helps eliminating puffiness and dark circles under the eyes.

The immediate result is smoother and luminous skin, diminishing the surface grid of wrinkles caused by lack of moisture.

Directions

Clean the application area by Moisturizing & Care remedies – step 1, and apply a small amount of the fluid lightly patting. Leave until completely absorbed. It is recommended to use twice a day for regenerative care.





BASED ON LINDEN FLORAL WATER

TONE & ELASTICITY

for normal and aging skin

We have combined products that correct age-related changes and prevent their emergence, increase elasticity, activate collagen synthesis and enrich the skin with essential vitamins, keeping it young and beautiful.

Ginseng extract stimulates the production of collagen, increasing skin elasticity, smoothes small wrinkles, improves blood microcirculation, improves skin tone, normalizes metabolic processes.

Brown algae extract and low molecular weight hyaluronic acid form a powerful moisturizing complex that prevents skin thinning and increases moisture reserves in the epidermis.

Wax from sprouted barley grains – improves skin regeneration, relieves irritation, reduces allergic reactions and increases the protective functions of the skin.





The products of the **Tone & Elasticity** series prevent the appearance of the first age-related changes by stimulating collagen synthesis, moisturizing and enriching the skin with all the necessary vitamins and beneficial acids contained in the active complex of vegetable oils.

A complex of three oils:

Avocado oil – creates favorable conditions for cellular regeneration, increases barrier functions, intensively nourishes and returns a healthy complexion and radiance to the skin.

Apricot oil – improves metabolic processes in the skin, increases elasticity and elasticity.

Peach oil – nourishes, moisturizes and tones the skin, promotes rejuvenation and lightening of the skin, has an anti-inflammatory effect.



Olfactory story

Grapefruit + Coriander

Captivating with the familiar aroma of grapefruit and orange, the composition nuance by nuance is complicated by the sweetness of rosewood, oriental warm spice of coriander and amber woody vetiver.

Top

orange / grapefruit

Heart

rosewood

Base

vetiver / coriander

Dermatological studies conducted among women aged 35 to 55 years with skin prone to fading, who used cosmetic products containing low molecular weight hyaluronic acid twice a day for 40 days, showed:

- hydration of the epidermal layer in 68 % of women
- smoothing of fine wrinkles in 63 % of women
- improvement of skin elasticity in 70% of women

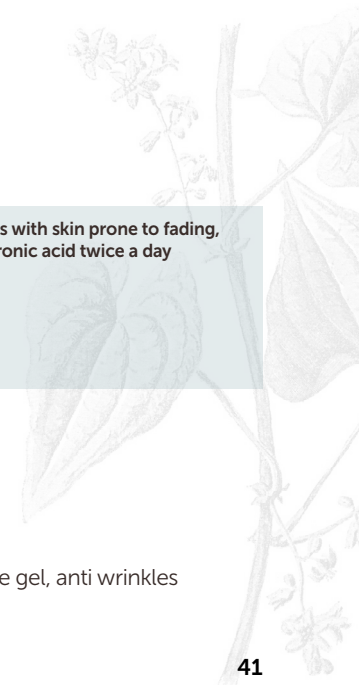
Products

Step 1 – micellar water, toning cleansing foam

Step 2 – natural apricot seed scrub

Step 3 – intensive lifting mask, stimulating serum

Step 4 – firming cream, firming tonic-hydrolate, lifting eye gel, anti wrinkles gel-filler



STEP 1 Makeup remover & cleansing

Micellar water

200 ml

Effect

- effectively cleanses the skin of makeup and impurities
- tones and moisturizes
- maintains hydrolipid balance

Active components

The **ginseng extract** activates the microcirculation process, effectively softens and tones the skin.

The **natural oils of avocado, apricot and peach** intensively nourish and moisturise the skin, improving its firmness and elasticity.

Vitamin E accelerates cell regeneration, **vitamin F** fills them with moisture, helps to reduce irritation and redness.

The **linden flower water** restores the water balance of the skin, strengthens its barrier function and improves the skin's complexion.

Directions

Apply the water on a cotton pad and wipe on massage lines the face, eyes and lips, removing pollution and makeup. Rinse with warm water. For morning and evening use.

Recommendation: complete the cleansing with a tonic-hydrolate.



Toning cleansing foam

150 ml

Effect

- gently cleanses the skin of makeup and impurities
- tones and refreshes
- maintains hydrolipid balance

Active components

The **ginseng extract** activates the microcirculation process, effectively softens and tones the skin.

The **natural oils of avocado, apricot and peach** intensively nourish and moisturise the skin, improving its firmness and elasticity.

The **linden flower water** restores the water balance of the skin, strengthens its barrier function and improves the skin's complexion.

Directions

Apply a small amount of the foam to damp face and neck skin, massage for 1 minute, avoiding around the eyes area, then rinse with warm water. Use morning and evening.

Recommendation: complete the cleansing with a tonic-hydrolate.



STEP 2 Deep cleansing

Natural apricot seed scrub

100 g

NATURAL
100%
INGREDIENTS

Эффект

- deep cleanses
- evens out microrelief and skin tone
- tones and refreshes

Active components

Due to the content of **crushed apricot kernel**, the scrub gently removes dead skin cells and excess sebum, and also promotes nutrients penetration into the deeper layers of the skin.

Ginseng extract activates microcirculation, effectively softens and tones the skin.

The natural oils of apricot, avocado, and peach intensively nourish and moisturize the skin, increase its firmness and elasticity.

Regular use of the scrub accelerates the regeneration process, smooths the microrelief and skin tone.

Directions

Apply a small amount of scrub to cleansed, damp skin, massage without effort for 1 minute and rinse with water. Use 1-2 times a week.

Recommendation: after contact with water complete the process with a tonic-hydrolate and use an intensive lifting mask for intensive care.



STEP 3 Intensive care

Intensive lifting mask

75 ml



Effect

- intensely nourishes and moisturizes
- has a lifting effect
- smoothes mimic wrinkles

Active components

An ideal cosmetic product for intensive care aimed at maintaining youthfulness and beauty of the skin.

Ginseng extract activates the microcirculation process, effectively tones and softens the skin.

Low molecular weight hyaluronic acid promotes long-term hydration of skin deep layers, evens out its tone and provides antioxidant protection.

Nourishing oils and vitamins accelerate collagen and elastin synthesis, fill the skin with energy and radiance.

Directions

Clean the skin with Tone & Elasticity remedies – step 1 and 2, apply a small amount of the mask, leave it for 10-15 minutes, rinse with warm water. The mask is recommended to use 1-2 times a week. Apply the stimulating serum Tone & Elasticity to complete intensive care step.

Recommendation: after the mask apply the stimulating serum Moisturizing & Care to complete intensive care step.

Stimulating serum

30 ml



Effect

- deeply nourishes and moisturizes
- provides a lifting effect
- eliminates signs of premature aging
- eliminates visible signs of fatigue and stress

Active components

Ginseng extract activates the process of microcirculation, effectively soothes and softens the skin, tones it.

Low molecular weight hyaluronic acid replenishes water balance, makes the skin smooth, hydrated and elastic.

Essential apricot, avocado, peach vegetable oils not only intensively nourish and moisturize the skin, but also accelerate collagen and elastin synthesis.

A natural remedy, fortified with vitamins, fills the skin with energy and erases fatigue traces from a face.

Directions

Pre-cleanse the application area with Tone & Elasticity products - step 1, apply a small amount of the serum along the massage lines. Leave until completely absorbed. It is recommended to use once a day before applying the daily care cream (morning or evening).

Recommendation: to improve the effect, top the serum with a firming cream for daily care.





STEP 4 Daily care

Firming tonic linden hydrolate



100 ml

Effect

- normalises the pH-balance
- keeps skin elasticity
- tones, moisturizes and refreshes

Active components

The firming linden hydrolate-**tonic** deeply moisturizes, strengthens and refreshes the skin, normalizes the pH-balance. The product stimulates cell regeneration, slowing the process of early aging. Due to its spray form, the tonic is easy to apply even over makeup.

Directions

Spray on clean face and neck after cleansing and wipe with a cotton pad. To instantly refresh and moisturize the skin, spray over makeup and let dry. Can be used several times during the day.

Firming cream

50 ml



Effect

- tones, moisturizes and softens
- strengthens the hydrolipid barrier
- eliminates premature aging signs
- provides antioxidant protection

Active components

Ginseng extract activates microcirculation process, effectively soothes and softens the skin, maintains its tone.

Low molecular weight hyaluronic acid fills the cells with moisture and retains it, restoring the water balance of the epidermis.

Nourishing oils and vitamins accelerate collagen and elastin synthesis, intensively nourish and moisturize the skin, filling it with energy and radiance.

With regular use, the cream provides the skin's natural protection against free radicals and restores a fresh, rested look.

Directions

Pre-cleanse the skin with Tone & Elasticity products – steps 1 and 2, apply the cream along the massage lines. It is recommended to use daily in the morning and in the evening.

Recommendation: after the cream for intensive care, use with Tone & Elasticity stimulating serum.

STEP 4 Daily care

Lifting eye gel

with a complex of peptides



20 ml

Effect

- promotes lifting and rejuvenation of the eyelids skin
- intensely nourishes
- deeply moisturizes and refreshes
- protects against the negative impact of external

Active components

Peptides provides intensive care aimed at maintaining the youthfulness and beauty of the skin around the eyes.

Ginseng extract activates the microcirculation process, effectively soothes and softens the skin, maintains its tone.

Low molecular weight hyaluronic acid, penetrating into the deep layers of the skin, restores its damaged cells and replenishes moisture.

Natural cranberry and sage extracts have a moisturizing, nourishing and tonic effect.

Nourishing oils and vitamins accelerate collagen and elastin synthesis, filling skin with energy and radiance.

Directions

Pre-cleanse the application area with Tone & Elasticity products – step 1, apply a small amount of lifting gel with light patting movements on the orbital bone. Leave until completely absorbed. Use the remedy by courses lasting 30-45 days with breaks of 1-1,5 months, 1-2 times a day.

Anti wrinkles gel-filler



20 ml

Effect

- increases skin elasticity and firmness
- promotes the formation of collagen fibers
- eliminates the first signs of age-related changes

Active components

Gel-filler will be an ideal compliment to your daily facial skin care ritual and will prevent first wrinkles appearance.

Seaweed complex stimulates collagen and elastin production, firms the skin and provides antioxidant protection.

Niacinamide improves microcirculation and improves skin elasticity.

Plant extracts and aloe vera gel moisturize and saturate cells with nutrients, give a healthy complexion.

Directions

Pre-clean the application area with Tone & Elasticity products – step 1, apply a small amount of gel-filler with light patting movements pointwise to the local correction areas. Use the remedy in courses lasting 30-45 days with breaks of 1-1.5 months, 1-2 times a day.



Micellar water

Micellar water NUTRITION & BALANCE

Aqua, Caprylyl/Capryl Glucoside, Anthemis Nobilis Flower Water, Zingiber Officinale Root Extract, Borago Officinalis Seed Oil, Oenothera Biennis Oil, Ribes Nigrum Seed Oil, Linoleic Acid, Linolenic Acid, Tocopheryl Acetate, Benzyl Alcohol, Ethylhexylglycerin, Cupressus Funebris Wood Oil, Pelargonium Graveolens Flower Oil, Mentha Arvensis Herb Oil, Eleteria Cardamomum Seed Oil, Citrus Limon Peel Oil, Rosa Damascena Flower Oil, Pogostemon Cablin Leaf Oil, Piper Nigrum Fruit Oil, Tetrasodium Glutamate Diacetate, Citronellol*, Geraniol*, Linalool*, Limonene*.

Micellar water RECOVERY & CARE

Aqua, Caprylyl/Capryl Glucoside, Hamamelis Virginiana Water, Panthenol, Arnica Montana Extract, Butyrospermum Parkii Butter, Linum Usitatissimum Seed Oil, Argania Spinosa Kernel Oil, Linoleic Acid, Linolenic Acid, Tocopheryl Acetate, Benzyl Alcohol, Ethylhexylglycerin, Citrus Sinensis Peel Oil, Citrus Limon Peel Oil, Ocimum Basilicum Oil, Aniba Rosaedora Wood Oil, Cymbopogon Flexuosus Herb Oil, Cymbopogon Winterianus Herb Oil, Illicium Verum Oil, Tetrasodium Glutamate Diacetate, Limonene*, Citral*, Linalool*, Geraniol*, Citronellol*.

Micellar water MOISTURIZING & CARE

Aqua, Caprylyl/Capryl Glucoside, Betaine, Centaurea Cyanus Flower Water, Rosa Canina Fruit Extract, Mangifera Indica Seed Butter, Camellia Oleifera Seed Oil, Cocos Nucifera Oil, Linoleic Acid, Linolenic Acid, Tocopheryl Acetate, Benzyl Alcohol, Ethylhexylglycerin, Citrus Limon Peel Oil, Ferula Galbaniflua Resin Oil, Citrus Sinensis Peel Oil, Canarium Commune Gum Oil, Eucalyptus Globulus Leaf Oil, Lippia Citriodora Oil, Litsea Cubeba Fruit Oil, Tetrasodium Glutamate Diacetate, Limonene*, Citral*.

Micellar water TONE & ELASTICITY

Aqua, Glycerin, Caprylyl/Capryl Glucoside, Tilia Platyphyllos Flower Water, Panax Ginseng Extract, Persea Gratissima Oil, Prunus Armeniaca Kernel Oil, Prunus Persica Kernel Oil, Linoleic Acid, Linolenic Acid, Tocopheryl Acetate, Benzyl Alcohol, Ethylhexylglycerin, Citrus Paradisi Peel Oil, Aniba Rosaedora Wood Oil, Vetiveria Zizanioides Root Oil, Citrus Sinensis Peel Oil, Coriandrum Sativum Fruit Oil, Tetrasodium Glutamate Diacetate, Limonene*, Linalool*.

Shelf life: 2 years.

*components of natural essential oils

Cleansing products

Cleansing gel NUTRITION & BALANCE

Aqua, Caprylyl/Capryl Glucoside, Coco-Glucoside, Lauryl Glucoside, Sodium Carboxymethylcellulose, Anthemis Nobilis Flower Water, Zingiber Officinale Root Extract, Borago Officinalis Seed Oil, Oenothera Biennis Oil, Ribes Nigrum Seed Oil, Benzyl Alcohol, Sodium Benzoate, Potassium Sorbate, Cupressus Funebris Wood Oil, Pelargonium Graveolens Flower Oil, Mentha Arvensis Herb Oil, Eleteria Cardamomum Seed Oil, Citrus Limon Peel Oil, Rosa Damascena Flower Oil, Pogostemon Cablin Leaf Oil, Piper Nigrum Fruit Oil, Tetrasodium Glutamate Diacetate, Citronellol*, Geraniol*, Linalool*, Limonene*.

Cleansing mousse RECOVERY & CARE

Aqua, Cocamidopropyl Betaine, Caprylyl/Capryl Glucoside, Coco-Glucoside, Panthenol, Hamamelis Virginiana Water, Arnica Montana Extract, Butyrospermum Parkii Butter, Linum Usitatissimum Seed Oil, Argania Spinosa Kernel Oil, Benzyl Alcohol, Ethylhexylglycerin, Citrus Sinensis Peel Oil, Citrus Limon Peel Oil, Ocimum Basilicum Oil, Aniba Rosaedora Wood Oil, Cymbopogon Flexuosus Herb Oil, Cymbopogon Winterianus Herb Oil, Illicium Verum Oil, Tetrasodium Glutamate Diacetate, Limonene*, Citral*, Linalool*, Geraniol*, Citronellol*.

Cleansing milk RECOVERY & CARE

Aqua, Caprylic/Capric Triglyceride, Coco Glucoside, Lauryl Glucoside, Helianthus Annuus Seed Oil, Glyceryl Stearate, Glyceryl Stearate Citrate, Glycerin, Cetearyl Alcohol, Benzyl Alcohol, Ethylhexylglycerin, Tocopheryl Acetate, Butyrospermum Parkii Butter, Linum Usitatissimum Seed Oil, Argania Spinosa Kernel Oil, Arnica Montana Extract, Hamamelis Virginiana Water, Linoleic Acid, Linolenic Acid, Citrus Sinensis Peel Oil, Citrus Limon Peel Oil, Ocimum Basilicum Oil, Aniba Rosaedora Wood Oil, Cymbopogon Flexuosus Herb Oil, Cymbopogon Winterianus Herb Oil, Illicium Verum Oil, Xanthan Gum, Tetrasodium Glutamate Diacetate, Limonene*, Citral*, Linalool*, Geraniol*, Citronellol*.

Cleansing gel MOISTURIZING & CARE

Aqua, Caprylyl/Capryl Glucoside, Coco-Glucoside, Lauryl Glucoside, Sodium Carboxymethylcellulose, Betaine, Rosa Canina Fruit Extract, Centaurea Mangifera Indica Seed Butter, Camellia Oleifera Seed Oil, Cocos Nucifera Oil, Benzyl Alcohol, Sodium Benzoate, Potassium Sorbate, Citrus Limon Peel Oil, Ferula Galbaniflua Resin Oil, Citrus Sinensis Peel Oil, Canarium Commune Gum Oil, Eucalyptus Globulus Leaf Oil, Lippia Citriodora Oil, Litsea Cubeba Fruit Oil, Tocopheryl Acetate, Linoleic Acid, Linolenic Acid, Tetrasodium Glutamate Diacetate, Citric Acid, Limonene*, Citral*.

Toning cleansing foam TONE & ELASTICITY

Aqua, Cocamidopropyl Betaine, Caprylyl/Capryl Glucoside, Coco-Glucoside, Glycerin, Tilia Platyphyllos Flower Water, Panax Ginseng Extract, Persea Gratissima Oil, Prunus Armeniaca Kernel Oil, Prunus Persica Kernel Oil, Benzyl Alcohol, Ethylhexylglycerin, Citrus Paradisi Peel Oil, Aniba Rosaedora Wood Oil, Vetiveria Zizanioides Root Oil, Citrus Sinensis Peel Oil, Coriandrum Sativum Fruit Oil, Tetrasodium Glutamate Diacetate, Limonene*, Linalool*.

Scrubs

Natural cedar shell scrub with Saki salt

NUTRITION & BALANCE

Pinus Sibirica Shell Powder, Brassica Napus Seed Oil, Maris Sal, Tocopheryl Acetate, Borago Officinalis Oil, Oenothera Biennis Oil , Ribes Nigrum Seed Oil, Cedrus Deodara Seed Oil, Pelargonium Roseum Leaf Oil, Mentha Arvensis Leaf Oil, Elettaria Cardamomum Seed Oil, Citrus Limon Seed Oil, Rosa Damascena Flower Oil, Pogostemon Cablin Leaf Oil, Piper Nigrum Fruit Oil, Rosmarinus Officinalis Leaf Extract, Zingiber Officinale Extract, Ascorbyl Palmitate, Linoleic Acid, Linolenic Acid , Salicylic Acid, Citronellol*, Linalool*, Limonene*, Geraniol*.

Natural walnut shell scrub-powder

RECOVERY & CARE

Juglans Regia Shell Powder, Brassica Napus Seed Oil, Tocopheryl Acetate, Linum Usitatissimum Seed Oil, Citrus Sinensis Peel Oil, Citrus Limon Seed Oil, Ocimum Basilicum Herb Oil, Aniba Rosaedora Wood Oil, Cymbopogon Citratus Leaf Oil, Cymbopogon Winterianus Herb Oil, Illicium Verum Oil , Argania Spinosa Kernel Oil, Butyrospermum Parkii Butter, Rosmarinus Officinalis Leaf Extract, Arnica Montana Flower Extract, Ascorbyl Palmitate, Linoleic Acid, Linolenic Acid, Citronellol*, Linalool*, Limonene*, Geraniol*.

Natural walnut shell scrub with sugar crystals

MOISTURIZING & CARE

Juglans Regia Shell Powder, Brassica Napus Seed Oil, Sucrose, Tocopheryl Acetate, Cocos Nucifera Seed Butter, Camellia Oleifera Seed Oil, Mangifera Indica Seed Butter, Rosa Canina Fruit Extract, Citrus Limon Seed Oil, Ferula Galbaniflua Resin Oil, Citrus Sinensis Peel Oil, Canarium Commune Gum Oil, Aloysia Triphylla Oil, Eucalyptus Globulus Leaf Oil, Litsea Cubeba Fruit Oil, Rosmarinus Officinalis Leaf Extract, Ascorbyl Palmitate, Linoleic Acid, Linolenic Acid, Citronellol*, Limonene*.

Natural apricot seed scrub

tone & LASTICITY

Prunus Armeniaca Seed Powder. Brassica Napus Seed Oil, Tocopheryl Acetate, Persea Grattissima Oil, Prunus Armeniaca Kernel Oil, Prunus Persica Kernel Oil, Citrus Paradisi Seed Oil, Aniba Rosaedora Wood Oil, Vetiveria Zizanioides Oil, Citrus Sinensis Peel Oil, Coriandrum Sativum Oil, Rosmarinus Officinalis Leaf Extract, Panax Ginseng Root Extract, Ascorbyl Palmitate, Linoleic Acid, Linolenic Acid, Citronellol*, Linalool*, Limonene*. Geraniol*.

Shel life: 2 years.

*components of natural essential oils

Masks

Seboregulating mask NUTRITION & BALANCE

Aqua, Kaolin, Coco-Caprylate/Caprata, Cetearyl Alcohol, Glycerin, Glycyrrhiza Glabra Fermented Filtrate, Glyceryl Stearate, Glyceryl Stearate Citrate, Borago Officinalis Seed Oil, Oenothera Biennis Oil, Ribes Nigrum Seed Oil, Zingiber Officinale Root Extract, Tocopheryl Acetate, Anthemis Nobilis Flower Oil, Linoleic Acid, Linolenic Acid, Xanthan Gum, Benzyl Alcohol, Ethylhexylglycerin, Cupressus Funebri Wood Oil, Pelargonium Graveolens Flower Oil, Mentha Arvensis Herb Oil, Elettaria Cardamomum Seed Oil, Citrus Limon Peel Oil, Rosa Damascena Flower Oil, Pogostemon Cablin Leaf Oil, Piper Nigrum Fruit Oil, Tetrasodium Glutamate Diacetate, Citronellol*, Geraniol*, Linalool*, Limonene*.

Soothing cream-mask RECOVERY & CARE

Aqua, Coco-Caprylate/Caprata, Cetearyl Alcohol, Glycerin, Glyceryl Stearate, Butyrospermum Parkii Butter, Glyceryl Stearate Citrate, Butylene Glycol**, Centella Asiatica Extract, Polygonum Cuspidatum Root Extract, Scutellaria Baicalensis Root Extract, Camellia Sinensis Leaf Extract, Glycyrrhiza Glabra (Licorice) Root Extract, Chamomilla Recutita (Matricaria) Flower Extract, Rosmarinus Officinalis (Rosemary) Leaf Extract, Stearic Acid, Tocopheryl Acetate, Linum Usitatissimum Seed Oil, Argania Spinosa Kernel Oil, Arnica Montana Extract, Hamamelis Virginiana Water, Euphorbia Cerifera (Candelilla) Wax, Linoleic Acid, Linolenic Acid, Xanthan Gum, Benzyl Alcohol, Ethylhexylglycerin, Citrus Sinensis Peel Oil, Citrus Limon Peel Oil, Ocimum Basilicum Oil, Aniba Rosaedora Wood Oil, Cymbopogon Flexuosus Herb Oil, Cymbopogon Winterianus Herb Oil, Illicium Verum Oil, Tetrasodium Glutamate Diacetate, Limonene*, Citral*, Linalool*, Geraniol*, Citronellol*.

Moisturizing mask MOISTURIZING & CARE

Aqua, Cetearyl Alcohol, Betaine, Coco-Caprylate/Caprata, Cocos Nucifera Oil, Glycerin, Glyceryl Stearate, Glyceryl Stearate Citrate, Saccharide Isomerate, Sodium Levulinate, p-Anisic Acid, Stearic Acid, Mangifera Indica Seed Butter, Camellia Oleifera Seed Oil, Rosa Canina Fruit Extract, Centaurea Cyanus Flower Water, Tocopheryl Acetate, Oryza Sativa Bran Wax, Linoleic Acid, Linolenic Acid, Xanthan Gum, Benzyl Alcohol, Ethylhexylglycerin, Citrus Limon Peel Oil, Ferula Galbaniflua Resin Oil, Citrus Sinensis Peel Oil, Canarium Commune Gum Oil, Eucalyptus Globulus Leaf Oil, Lippia Citriodora Oil, Litsea Cubeba Fruit Oil, Tetrasodium Glutamate Diacetate, Limonene*, Citral*.

Intensive lifting mask TONE & ELASTICITY

Aqua, Glycerin, Coco-Caprylate/Caprata, Cetearyl Alcohol, Glyceryl Stearate, Glyceryl Stearate Citrate, Hyaluronic Acid, Tocopheryl Acetate, Persea Grattissima Oil, Prunus Armeniaca Kernel Oil, Prunus Persica Kernel Oil, Panax Ginseng Extract, Tilia Platyphyllos Flower Water, Linoleic Acid, Linolenic Acid, Xanthan Gum, Benzyl Alcohol, Ethylhexylglycerin, Citrus Paradisi Peel Oil, Aniba Rosaedora Wood Oil, Vetiveria Zizanioides Root Oil, Citrus Sinensis Peel Oil, Coriandrum Sativum Fruit Oil, Tetrasodium Glutamate Diacetate, Limonene*, Linalool*.

Serums

Balancing serum NUTRITION & BALANCE

CocraB/Ingredients: Ribes Nigrum Seed Oil, Borago Officinalis Seed Oil, Oenothera Biennis Oil, Caprylic/Capric Triglyceride, Helianthus Annuus Seed Oil, Tocopheryl Acetate, Salicylic Acid, Zingiber Officinale Root Extract, Cedrus Deodara Seed Oil, Pelargonium Roseum Leaf Oil, Mentha Arvensis Leaf Oil, Elettaria Cardamomum Seed Oil, Citrus Limon Seed Oil, Rosa Damascena Flower Oil, Pogostemon Cablin Leaf Oil, Piper Nigrum Fruit Oil, Rosmarinus Officinalis Leaf Extract, Ascorbyl Palmitate, Linoleic Acid, Linolenic Acid, Citronellol*, Linalool*, Limonene*, Geraniol* .

Revitalizing nourishing serum RECOVERY & CARE

Coctab / Ingredients: Aqua, Hamamelis Virginiana Water, Caprylic/Capric Triglyceride, Glycerin, Potyglyceryl-6 Stearate, Glyceryl Stearate, Cetearyl Alcohol, Butyrospermum Parkll Extract, Argania Spinosa Kernel Oil, Spent Grain Wax, Polyglyceryl-6 Behenate, Tocopheryl Acetate, Butyrospermum Parkii Butter, Linum Usitatissimum Seed Oil, Xanthan Gum, Arnica Montana Extract, Citrus Sinensis Peel Oil, Citrus Limon Peel Oil, Ocimum Basilicum Herb Oil, Aniba Rosaedora Wood Oil, Cymbopogon Citratus Leaf Oil Cymbopogon Winterianus Herb Oil, Illicium Verum Oil, Benzyl Alcohol, Sodium Benzoate, Potassium Sorbate, Citric Acid, Ascorbyl Palmitate, Linoleic Acid, Linolenic Acid, Tetrasodium Glutamate Diacetate, Citronellol*, Linalool*, Limonene*.

Moisturizing serum MOISTURIZING & CARE

CocraB/Ingredients: Aqua, Centaurea Cyanus Flower Water, Caprylic/Capric Triglyceride, Betaine, Glycerin, Polyglyceryl-6 Stearate, Saccharide Isomerate, Glyceryl Stearate, Cetearyl Alcohol, Tocopheryl Acetate, Polyglyceryl-6 Behenate, Camellia Oleifera Seed Oil, Cocos Nucifera Seed Butter, Mangifera Indica Seed Butter, Rosa Canina Fruit Extract, Xanthan Gum Citrus Limon Peel Oil, Ferula Galbaniflua Resin Oil, Citrus Sinensis Peel Oil, Canarium Commune Gum Oil, Verbena Officinalis Oil, Eucalyptus Globulus Leaf Oil, Litsea Cubeba Fruit Oil, Benzyl Alcohol, Sodium Benzoate, Potassium Sorbate, Ascorbyl Palmitate, Linoleic Acid, Linolenic Acid, Citric Acid, Tetrasodium Glutamate Diacetate, Citronellol*, Limonene*.

Stimulating serum TONE & ELASTICITY

Coctab/Ingredients: Aqua, Tilia Platyphyllos Flower Water, Caprylic/Capric Triglyceride, Glycerin, Polyglyceryl-6 Stearate, Glyceryl Stearate, Cetearyl Alcohol, Macrocystis Pyrifera Extract, Hyaluronic Acid, Tocopheryl Acetate, Polyglyceryl-6 Behenate, Prunus Armeniaca Kernel Oil, Persea Gratissima Oil, Prunus Persica Kernel Oil, Panax Ginseng Extract, Xanthan Gum, Citrus Paradisi Peel Oil, Aniba Rosaedora Wood Oil, Vetiveria Zizanioides Oil, Citrus Sinensis Peel Oil, Coriandrum Sativum Oil, Benzyl Alcohol, Sodium Benzoate, Potassium Sorbate, Citric Acid, Ascorbyl Palmitate, Linoleic Acid, Linolenic Acid, Tetrasodium Glutamate Diacetate, Limonene*, Citronellol*, Linalool*, Geraniol*.

Creams

Matting cream NUTRITION & BALANCE

Aqua, Caprylic/Capric Triglyceride, Cetearyl Alcohol, Glycyrhrhiza Glabra Fermented Filtrate, Glyceryl Stearate, Glycerin, Potassium Olivoyl Hydrolyzed Wheat Protein, Glyceryl Oleate, Kaolin, Tocopheryl Acetate, Zingiber Officinale Root Extract, Borago Officinalis Seed Oil, Oenothera Biennis Oil, Ribes Nigrum Seed Oil, Anthemis Nobilis Flower Water, Linoleic Acid, Linolenic Acid, Xanthan Gum, Benzyl Alcohol, Ethylhexylglycerin, Cupressus Funebri Wood Oil, Pelargonium Graveolens Flower Oil, Mentha Arvensis Herb Oil, Elettaria Cardamomum Seed Oil, Citrus Limon Peel Oil, Rosa Damascena Flower Oil, Pogostemon Cablin Leaf Oil, Piper Nigrum Fruit Oil, Tetrasodium Glutamate Diacetate, Citronellol*, Geraniol*, Linalool*, Limonene*.

Soothing cream RECOVERY & CARE

Aqua, Caprylic/Capric Triglyceride, Cetearyl Alcohol, Glyceryl Stearate, Panthenol, Glycerin, Potassium Olivoyl Hydrolyzed Wheat Protein, Glyceryl Oleate, Butylene Glycol**, Centella Asiatica Extract, Polygonum Cuspidatum Root Extract, Scutellaria Baicalensis Root Extract, Camellia Sinensis Leaf Extract, Glycyrhrhiza Glabra (Licorice) Root Extract, Chamomilla Recutita (Matricaria) Flower Extract, Rosmarinus Officinalis (Rosemary) Leaf Extract, Tocopheryl Acetate, Butyrospermum Parkii Butter, Linum Usitatissimum Seed Oil, Argania Spinosa Kernel Oil, Arnica Montana Extract, Hamamelis Virginiana Water, Linoleic Acid, Linolenic Acid, Xanthan Gum, Benzyl Alcohol, Ethylhexylglycerin, Citrus Sinensis Peel Oil, Citrus Limon Peel Oil, Ocimum Basilicum Oil, Aniba Rosaedora Wood Oil, Cymbopogon Flexuosus Herb Oil, Cymbopogon Winterianus Herb Oil, Illicium Verum Oil, Tetrasodium Glutamate Diacetate, Limonene*, Citral*, Linalool*, Geraniol*, Citronellol*.

Moisturizing cream MOISTURIZING & CARE

Aqua, Caprylic/Capric Triglyceride, Betaine, Cetearyl Alcohol, Cocos Nucifera Oil, Glycerin, Glyceryl Stearate, Potassium Olivoyl Hydrolyzed Wheat Protein, Glyceryl Oleate, Saccharide Isomerate, Sodium Levulinate, p-Anisic Acid, Tocopheryl Acetate, Mangifera Indica Seed Butter, Camellia Oleifera Seed Oil, Rosa Canina Seed Oil, Centaurea Cyanus Flower Water, Linoleic Acid, Linolenic Acid, Xanthan Gum, Benzyl Alcohol, Ethylhexylglycerin, Citrus Limon Peel Oil, Ferula Galbaniflua Resin Oil, Citrus Sinensis Peel Oil, Canarium Commune Gum Oil, Eucalyptus Globulus Leaf Oil, Lippia Citriodora Oil, Litsea Cubeba Fruit Oil, Tetrasodium Glutamate Diacetate, Limonene*, Citral* .

Firming cream TONE & ELASTICITY

Aqua, Caprylic/Capric Triglyceride, Persea Gratissima Oil, Cetearyl Alcohol, Glyceryl Stearate, Glycerin, Potassium Olivoyl Hydrolyzed Wheat Protein, Glyceryl Oleate, Tocopheryl Acetate, Hyaluronic Acid, Prunus Armeniaca Kernel Oil, Prunus Persica Kernel Oil, Panax Ginseng Extract, Tilia Platyphyllos Flower Water, Linoleic Acid, Linolenic Acid, Xanthan Gum, Benzyl Alcohol, Ethylhexylglycerin, Citrus Paradisi Peel Oil, Aniba Rosaedora Wood Oil, Vetiveria Zizanioides Root Oil, Citrus Sinensis Peel Oil, Coriandrum Sativum Fruit Oil, Tetrasodium Glutamate Diacetate, Limonene*, Linalool*.

Shel life: 2 years.

*components of natural essential oils

Tonic-hydrolates

Balancing tonic

NUTRITION & BALANCE

Anthem. Nobilis Flower Water, Benzyl Alcohol.

Soothing tonic

RECOVERY & CARE

Hamamelis/Virginiana Flower Water, Benzyl Alcohol.

Moisturizing tonic

MOISTURIZING & CARE

Centaurea Cyanus Flower Water, Benzyl Alcohol.

Firming tonic

TONE & ELASTICITY

Tilia Platyphyllos Flower Water, Benzyl Alcohol.

Special care

Perfecting spot corrector NUTRITION & BALANCE

Aqua, Anthem. Nobilis Flower Water, Cetearyl Alcohol, Chelidonium Majus Oil, Caprylic/Capric Triglyceride, Azelaic Acid, Zinc Oxide, Polyglyceryl-6 Stearate, Glycerin, Zingiber Officinale Root Extract, Panthenol, Zinc Pca, Glyceryl Monostearate, Borago Officinalis Oil, Laurus Nobilis L. Oil, Centella Asiatica Extract, Salicylic Acid, Allantoin, Polyglyceryl-6 Behenate, Cedrus Deodara Wood Oil, Pelargonium Graveolens Leaf Oil, Mentha Arvensis Leaf Oil, Elettaria Cardamomum Seed Oil, Citrus Limon Peel Oil, Rosa Damascena Flower Oil, Pogostemon Cablin Leaf Oil, Piper Nigrum Fruit Oil, Sodium Benzoate, Potassium Sorbate, Benzyl Alcohol, Xanthan Gum, Tetrasodium Glutamate Diacetate, Citronellol*, Linalool*, Limonene*, Citral*, Geraniol*, Farnesol* Linalool*.

Anti dark circles eye gel RECOVERY & CARE

Aqua, Hamamelis/Virginiana Flower Water, Glycerin, Niacinamide, Caffeine, Xanthan Gum, Chlorella Vulgaris Extract, Green Tea Extract, Arnica Montana Flower Extract, Centella Asiatica Leaf Extract, Prunus Amygdalus Dulcis Oil, Linum Usitatissimum Seed Oil, Benzyl Alcohol, Ethylhexylglycerin, Citric Acid, Citrus Sinensis Peel Oil, Citrus Limon Peel Oil, Ocimum Basilicum Herb Oil, Aniba Rosaeodora Wood Oil, Cymbopogon Citratus Leaf Oil, Cymbopogon Winterianus Herb Oil, Illicium Verum Oil, Tetrasodium Glutamate Diacetate, Limonene*, Linalool*, Geraniol*.

Moisturizing fluid MOISTURIZING & CARE

Aqua, Centaurea Cyanus Flower Water, Caprylic/Capric Triglyceride, Betaine, Polyglyceryl-6 Stearate, Saccharide Isomerate, Cocos Nucifera Seed Butter, Glycerin, Cetearyl Alcohol, Tocopheryl Acetate, Olive Oil, Glyceryl Stearate, Linoleic Acid, Linolenic Acid, Rosa Canina Fruit Extract, Echinaceae Angustifolia Extract, Violet flower Extract, Benzyl Alcohol, Polyglyceryl-6 Behenate, Ethylhexylglycerin, Proline, Serine, Inositol, Citrus Limon Seed Oil, Ferula Galbaniflua Resin Oil, Citrus Sinensis Peel Oil, Canarium Commune Gum Oil, Verbena Officinalis Oil, Eucalyptus Globulus Leaf Oil, Litsea Cubeba Fruit Oil, Citric Acid, Tetrasodium Glutamate Diacetate, Limonene*.

Lifting eye gel TONE & ELASTICITY

Aqua, Tilia Platyphyllos Flower Water, Glycerin, Xanthan Gum, Niacinamide, Hyaluronic Acid, Macrocystis Pyrifera Extract, Vaccinium Macrocarpon Fruit Extract, Salvia Officinalis Extract, Panax Ginseng Root Extract, Prunus Armeniaca Kernel Oil, Prunus Persica Kernel Oil, Tocopheryl Acetate, Benzyl Alcohol, Ethylhexylglycerin, Citric Acid, Hydroxypropyl Cyclodextrin, Palmitoyl Tripeptide-38, Citrus Paradisi Seed Oil, Aniba Rosaeodora Wood Oil, Vetiveria Zizanioides Oil, Citrus Sinensis Peel Oil, Coriandrum Sativum Oil, Tetrasodium Glutamate Diacetate, Limonene*, Linalool*.

Anti wrinkles gel-filler TONE & ELASTICITY

Aqua, Glycerin, Tilia Platyphyllos Flower Water, Xanthan Gum, Algae Extract, Pullulan, Niacinamide, Hippophae Rhamnoides Fruit Extract, Rubus Chamaemorus Fruit Extract, Aloe Barbadosensis Leaf Juice, Panax Ginseng Extract, Citrus Paradisi Seed Oil, Citrus Sinensis Peel Oil, Coriandrum Sativum Oil, Vetiveria Zizanioides Root Oil, Aniba Rosaeodora Wood Oil, Benzyl Alcohol, Ethylhexylglycerin, Tetrasodium Glutamate Diacetate, Limonene*, Linalool*.

Shel life: 2 years.

*components of natural essential oils

STEP 1

Makeup remover & cleansing

MICELLAR WATERS



Micellar water
NUTRITION & BALANCE



Micellar water
RECOVERY & CARE



Micellar water
MOISTURIZING & CARE



Micellar water
TONE & ELASTICITY

CLEANSING GELS



Cleansing gel
NUTRITION & BALANCE



Cleansing gel
MOISTURIZING & CARE

CLEANSING PRODUCTS



Cleansing mousse
RECOVERY & CARE



Cleansing milk
RECOVERY & CARE



Toning cleansing foam
TONE & ELASTICITY

STEP 2

Deep cleansing

SCRUBS



natural cedar shell scrub
with Saki salt
NUTRITION & BALANCE



Natural walnut shell
scrub-powder
RECOVERY & CARE



Natural walnut shell scrub with
sugar crystals
MOISTURIZING & CARE



Natural apricot seed scrub
TONE & LASTICITY

STEP 3 Intensive care

MASKS



Seboregulating mask
NUTRITION & BALANCE



Soothing cream-mask
RECOVERY & CARE



Moisturizing mask
MOISTURIZING & CARE



Intensive lifting mask
TONE & ELASTICITY

SERUMS



Balancing serum
NUTRITION & BALANCE



Revitalizing nourishing serum
RECOVERY & CARE



Moisturizing cream
MOISTURIZING & CARE



Stimulating serum
TONE & ELASTICITY

STEP 4 Daily care

TONIC-HYDROLATES



Balancing tonic
NUTRITION & BALANCE



Soothing tonic
RECOVERY & CARE



Moisturizing tonic
MOISTURIZING & CARE



Firming tonic
TONE & ELASTICITY

STEP 4 Daily care

CREAMS



Matting cream
NUTRITION & BALANCE



Soothing cream
RECOVERY & CARE



Moisturizing cream
MOISTURIZING & CARE



Firming cream
TONE & ELASTICITY

SPECIAL CARE



Perfecting spot corrector
NUTRITION & BALANCE



Anti dark circles eye gel
RECOVERY & CARE



Moisturizing fluid
MOISTURIZING & CARE



Anti wrinkles gel-filler
TONE & ELASTICITY



Lifting eye gel
TONE & ELASTICITY





BOTAVIKOS
skin care & aromatherapy

You know
what makes you
different from others

Online-shop www.botavikos.club

Social media   [botavikos](#)